

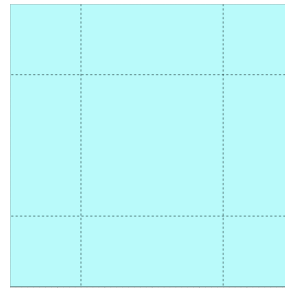
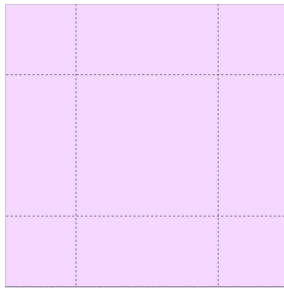


Hinged Lid Gift Box

2 Sheets of 12 x 12 - One Explosive Project!

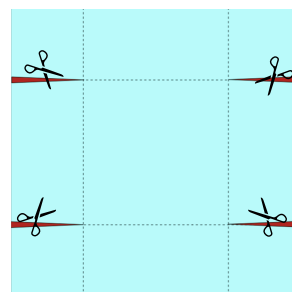
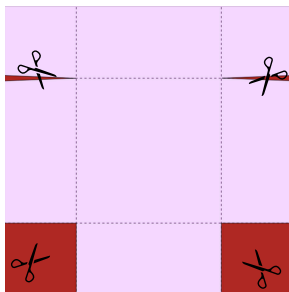
✂ **CHOP IT UP!** Fresh Cuts Template #4

Score



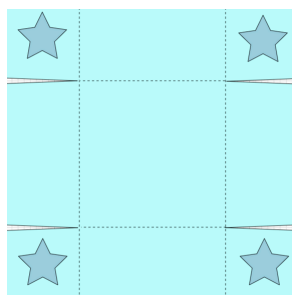
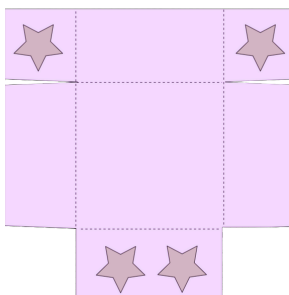
- On both 12x12 sheets, score at 3 inches on all four sides.
- This creates your box shape (6x6 base with 3" sides).

Cut



- Make tab-release cuts on each sheet.
- Bottom piece: all four tabs stay. Top piece (lid): keep two opposite tabs, cut away the other two
- The large flap created on the lid will become your hinge.

Fold & Glue



- Bottom: glue all four tabs on the inside to form the full box.
- Lid: glue only the two remaining tabs to create the lid shape.
- Attach the hinge flap to the outside of the bottom box.
- This creates a smooth, opening-and-closing hinged lid that fits perfectly.

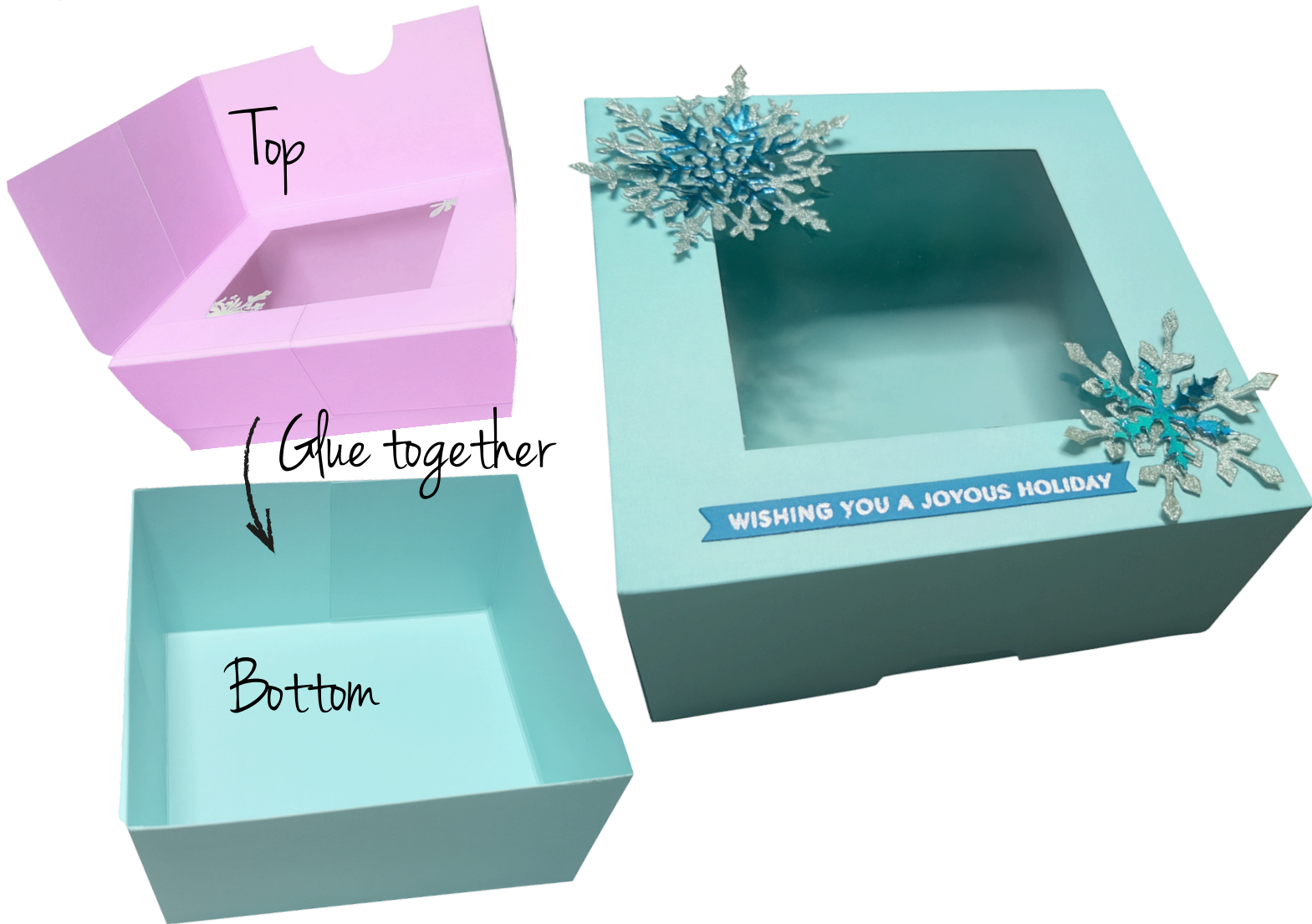




Hinged Lid Gift Box

2 Sheets of 12 x 12 - One Explosive Project!

✂ **CHOP IT UP!** Fresh Cuts Template #4



Bonus Tips

Reinforce the hinge by folding a scrap piece in half, glue it inside the hinge area.

Add a window by cutting a shape into the lid and back it with acetate.

Punch a half circle to create a finger notch to open the box.

Decorate, add embellishments to dress up your finished box

